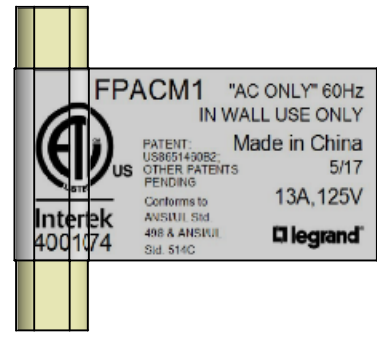
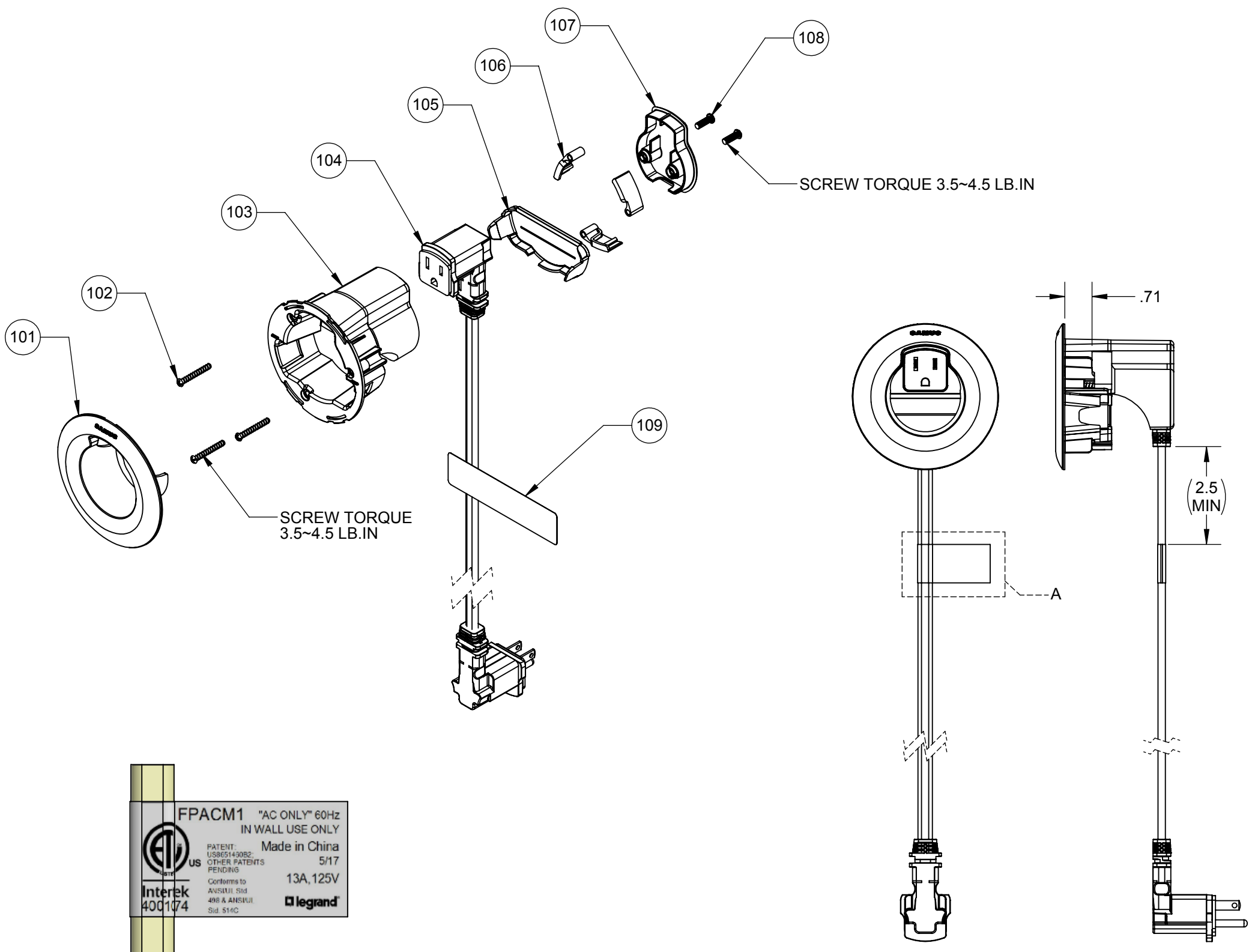


PRODUCTION



DETAIL A
SCALE 1 : 1

ITEM	PART NUMBER	DESCRIPTION	QTY
101	1020428	FPACM1 TOP TRIM RING	1
102	1013620	SCREW M3.5X30MM PPH THREAD FORMING	3
103	1013664	CMK70 & CMK75 HOUSING	1
104	1013670	CMK70 IN-WALL POWER HARNESS	1
105	1013667	CMK70 & CMK75 CABLE CLOSURE ASSEMBLY	1
106	1023102	WALL GROMMET TAB	3
107	1013661	CMK70 & CMK75 BACK COVER	1
108	1013669	SCREW, M4 X12MM THREAD FORMING	2
109	1020436	PLABEL FPACM1 PRODUCT LABEL	1

ENVIRONMENTAL MATERIAL REQUIREMENTS
 PRODUCTS, PARTS AND ASSEMBLIES PROVIDED UNDER THIS DRAWING MUST MEET THE REQUIREMENTS DETAILED IN THE LATEST REVISION OF THE LEGRAND NORTH AMERICA CORPORATE ENVIRONMENTAL MATERIAL REQUIREMENTS (EMR) DOCUMENT EMS-009. ANY DEVIATION FROM THE EMR REQUIREMENTS MUST BE APPROVED BY AN AUTHORIZED REPRESENTATIVE OF LEGRAND/WIREMOLD PRODUCT ENGINEERING IN WRITING. THE LATEST EMR DOCUMENT IS AVAILABLE ON REQUEST.

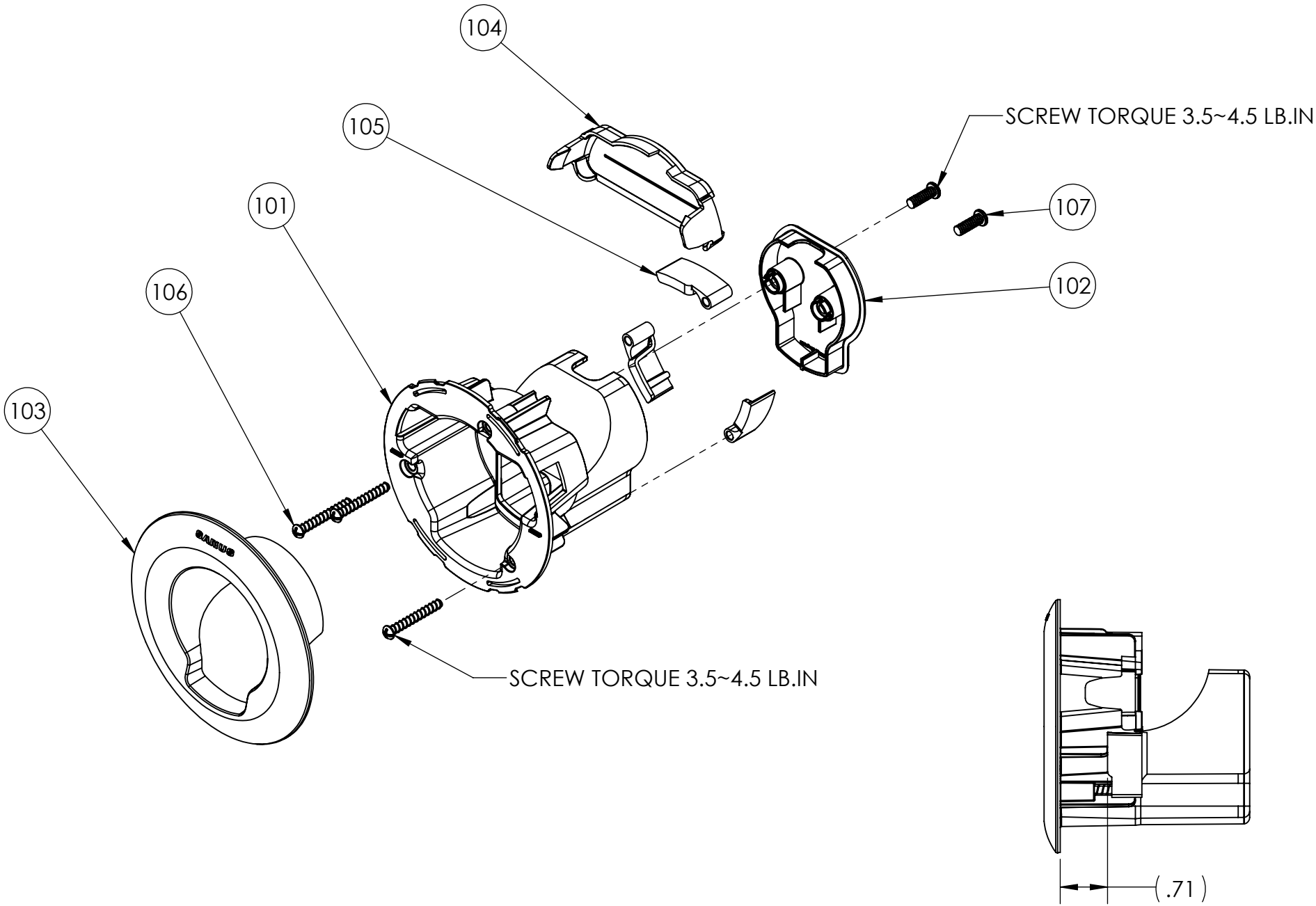
ASSEMBLY SPECIFICATION	
ASSEMBLY STEPS	
1.	PUT POWER HARNESS (ITEM104) INTO HOUSING (ITEM103)
2.	ASSEMBLE BACK COVER (ITEM 107) ONTO HOUSING (ITEM 103) WITH (2) SCREWS (ITEM 108)
3.	ASSEMBLE (3) WALL GROMMET TABS (ITEM 106) ONTO HOUSING (ITEM 103) WITH (1) SCREW (ITEM 102) IN EACH TAB.
4.	SNAP CABLE CLOSURE ASSEMBLY (ITEM 105) ONTO HOUSING (ITEM 103).
5.	SNAP TOP TRIM RING (ITEM 101) ONTO HOUSING (ITEM 103)
6.	APPLY LABEL (ITEM109) TO POWER HARNESS (ITEM104) AS SHOWN IN DETAIL A
ASSEMBLY CRITICAL REQUIREMENTS	
1.	SCREW TORQUE TO BETWEEN 3.5 AND 4.5 IN-LB (ITEM 102 & ITEM 108)
2.	ENSURE THE WALL GROMMET TABS ARE INSTALLED THE PROPER DISTANCE FROM THE INSIDE FACE TO ALLOW THEM TO ROTATE INTO THE FULLY CLOSED POSITION. USE 0.71 DIMENSION AS A REFERENCE.
3.	ENSURE THE TEXT ON THE PRODUCT LABEL IS CLEARLY VISIBLE AS SHOWN IN DETAIL A.

B	RELEASE FOR PRODUCTION	LY	RRP	4/26/2018
REV	DESCRIPTION	BY	CHK	DATE

	UNLESS OTHERWISE SPECIFIED: DIMENSIONS ARE IN INCHES	TITLE: FPACM1 TOP MODULE ASSEMBLY	
	ASSEMBLY WEIGHT: 1.51 LB.	TOLERANCE: 0 = ±.250 0.0 = ±.100 0.00 = ±.030 0.000 = ±.010 ANGULAR = ±1°	THIRD ANGLE PROJECTION
	(X.XXX) INSPECTION DIMENSION	FILE NAME: 1020426 DWG. NO.	REV B
DO NOT SCALE DRAWING	SCALE: 1:3	SHEET 1 OF 1	

PROPRIETARY DATA NOTICE: THIS DOCUMENT AND ALL INFORMATION THEREON IS PROPRIETARY TO AND THE EXCLUSIVE PROPERTY OF THE WIREMOLD COMPANY AND SHALL NOT BE REPRODUCED, DUPLICATED, OR COPIED IN WHOLE OR PART, DISPOSED OF OR MADE AVAILABLE TO ANY OTHER PERSON, FIRM, OR CORPORATION OR OTHERWISE USED WITHOUT WRITTEN PERMISSION OF THE WIREMOLD COMPANY. THIS DRAWING/PRINT MUST BE RETURNED TO THE WIREMOLD COMPANY UPON COMPLETION OF THE PURPOSE FOR WHICH SUCH PERMISSION MAY HAVE BEEN GRANTED.

PRODUCTION



ITEM	PART NUMBER	DESCRIPTION	QTY
101	1013664	CMK70 & CMK75 HOUSING	1
102	1013661	CMK70 & CMK75 BACK COVER	1
103	1020429	FPACM1 BOTTOM TRIM RING	1
104	1013667	CMK70 & CMK75 CABLE CLOSURE ASSEMBLY	1
105	1023102	WALL GROMMET TAB	3
106	1013620	SCREW M3.5X30MM PPH THREAD FORMING	3
107	1013669	SCREW, M4 X12MM THREAD FORMING	2

ENVIRONMENTAL MATERIAL REQUIREMENTS

PRODUCTS, PARTS AND ASSEMBLIES PROVIDED UNDER THIS DRAWING MUST MEET THE REQUIREMENTS DETAILED IN THE LATEST REVISION OF THE LEGRAND NORTH AMERICA CORPORATE ENVIRONMENTAL MATERIAL REQUIREMENTS (EMR) DOCUMENT EMS-009. ANY DEVIATION FROM THE EMR REQUIREMENTS MUST BE APPROVED BY AN AUTHORIZED REPRESENTATIVE OF LEGRAND/WIREMOLD PRODUCT ENGINEERING IN WRITING. THE LATEST EMR DOCUMENT IS AVAILABLE ON REQUEST.

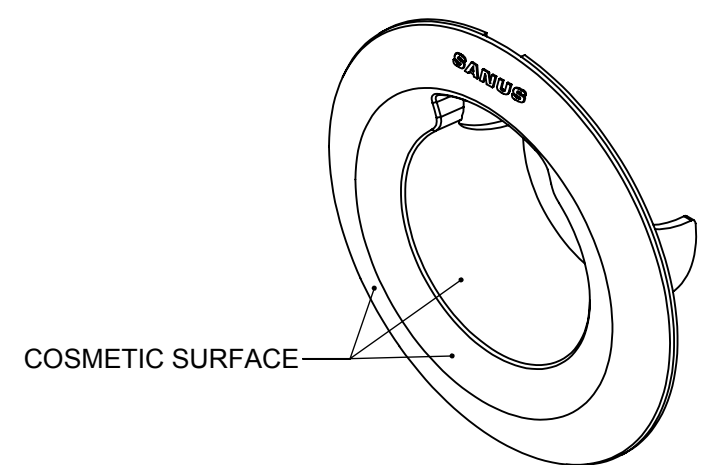
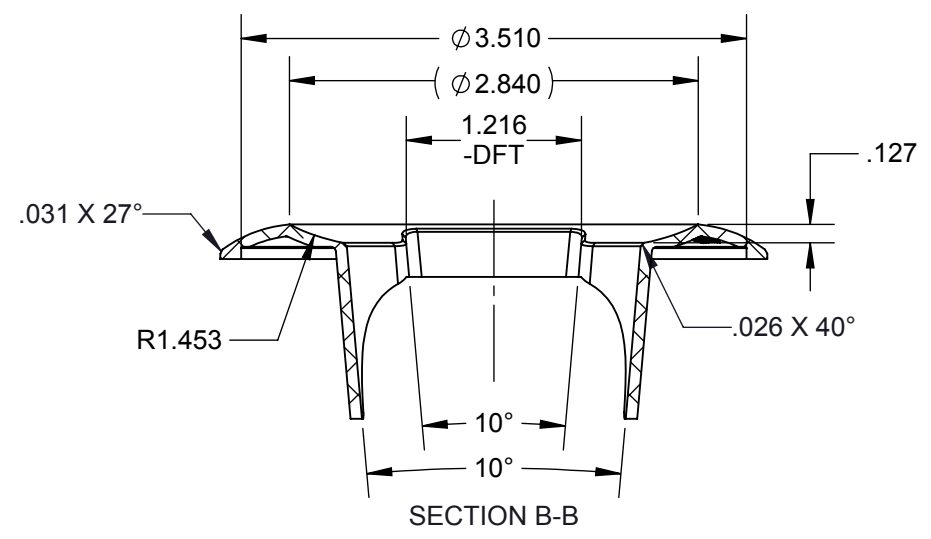
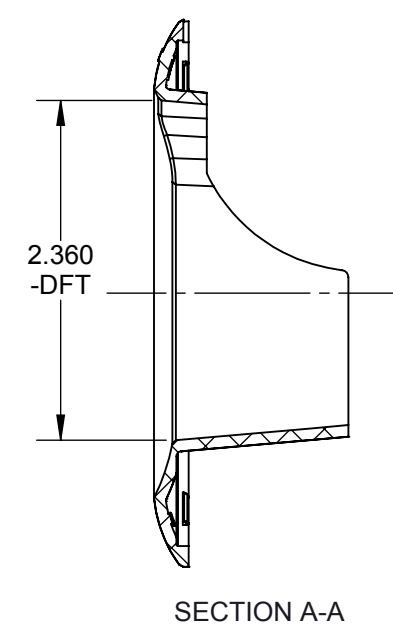
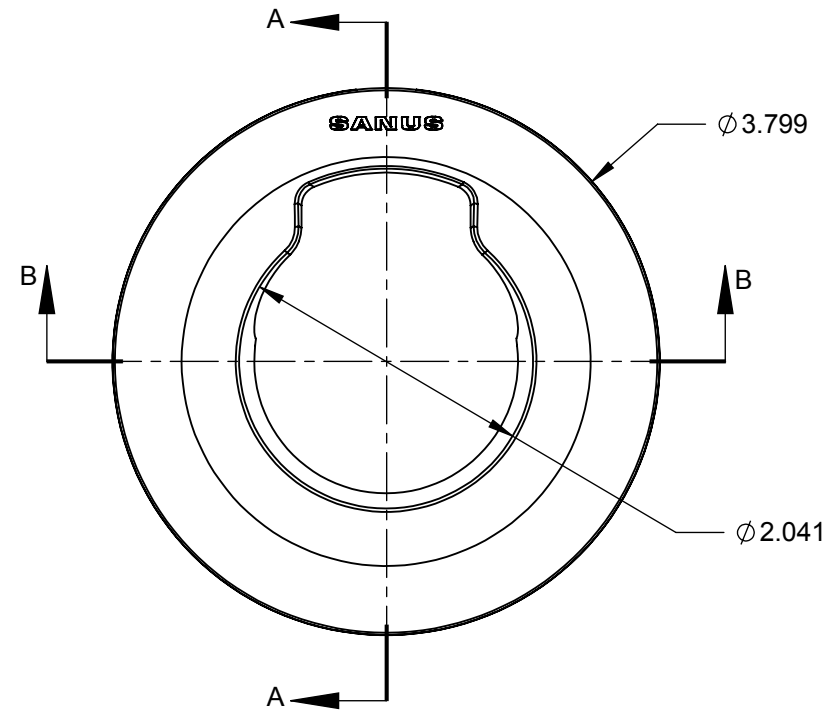
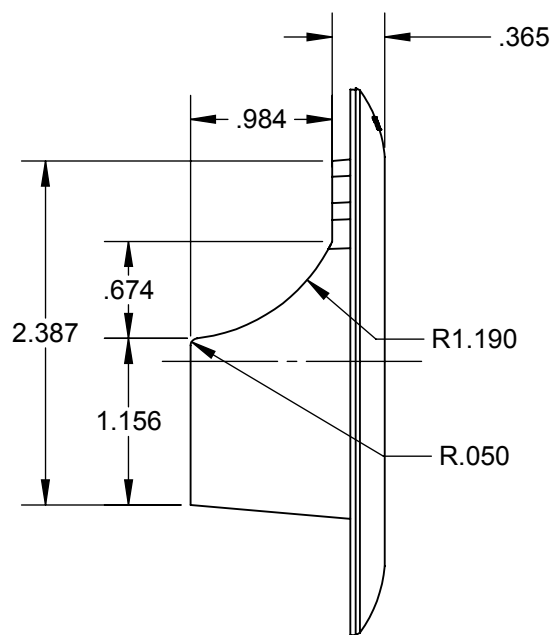
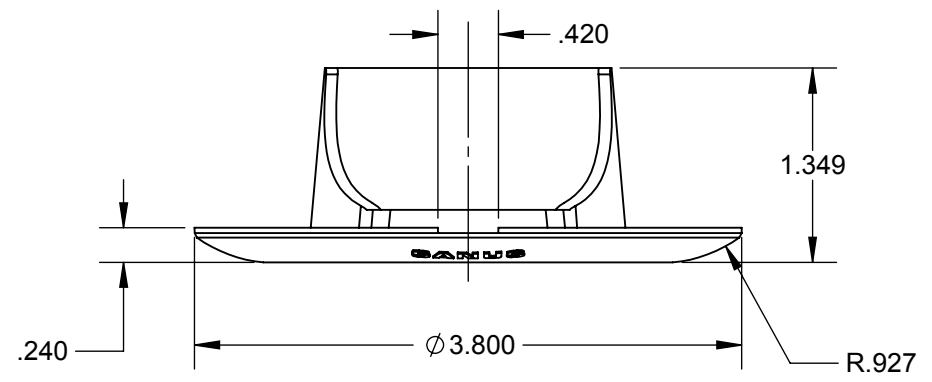
ASSEMBLY SPECIFICATION

- ASSEMBLY STEPS**
- ASSEMBLE BACK COVER (ITEM 102) ONTO HOUSING (ITEM 101) WITH (2) SCREWS (ITEM 107)
 - ASSEMBLE (3) WALL GROMMET TABS (ITEM 105) ONTO HOUSING (ITEM 101) WITH (1) SCREW (ITEM 106) IN EACH TAB.
 - SNAP CABLE CLOSURE ASSEMBLY (ITEM 104) ONTO HOUSING (ITEM 101).
 - SNAP BOTTOM TRIM RING (ITEM 103) ONTO HOUSING (ITEM 101)
- ASSEMBLY CRITICAL REQUIREMENTS**
- SCREW TORQUE TO BETWEEN 3.5 AND 4.5 IN-LB (ITEM 106 & ITEM 107)
 - ENSURE THE WALL GROMMET TABS ARE INSTALLED THE PROPER DISTANCE FROM THE INSIDE FACE TO ALLOW THEM TO ROTATE INTO THE FULLY CLOSED POSITION. USE 0.71 DIMENSION AS A REFERENCE.

B	RELEASE FOR PRODUCTION	LY	RRP	4/26/2018
REV.	DESCRIPTION	BY	CHK	DATE
UNLESS OTHERWISE SPECIFIED: DIMENSIONS ARE IN INCHES		TITLE: FPACM1 BOTTOM WALL GROMMET ASSEMBLY		
ASSEMBLY WEIGHT: 0.17 LB.	TOLERANCE: 0 = ±.250 0.0 = ±.100 0.00 = ±.030 0.000 = ±.010 ANGULAR = ±1°	THIRD ANGLE PROJECTION		FILE NAME: 1020427 DWG. NO.
(X.XXX) INSPECTION DIMENSION	DO NOT SCALE DRAWING		SCALE: 1:2	REV B
SHEET 1 OF 1		1020427		

PROPRIETARY DATA NOTICE: THIS DOCUMENT AND ALL INFORMATION THEREON IS PROPRIETARY TO AND THE EXCLUSIVE PROPERTY OF THE WIREMOLD COMPANY AND SHALL NOT BE REPRODUCED, DUPLICATED, OR COPIED IN WHOLE OR PART, DISPOSED OF OR MADE AVAILABLE TO ANY OTHER PERSON, FIRM, OR CORPORATION OR OTHERWISE USED WITHOUT WRITTEN PERMISSION OF THE WIREMOLD COMPANY. THIS DRAWING/PRINT MUST BE RETURNED TO THE WIREMOLD COMPANY UPON COMPLETION OF THE PURPOSE FOR WHICH SUCH PERMISSION MAY HAVE BEEN GRANTED.

PRODUCTION



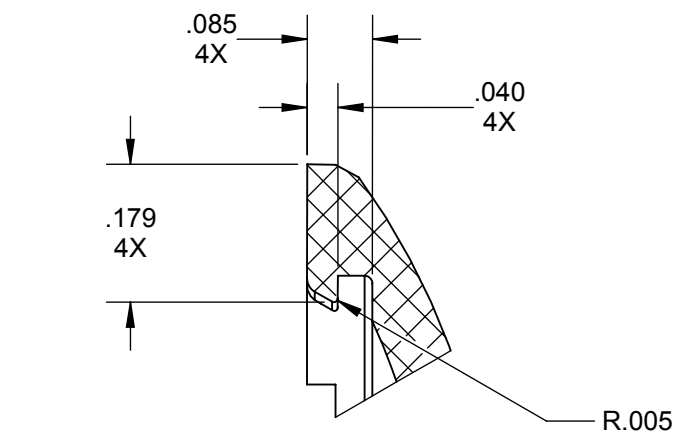
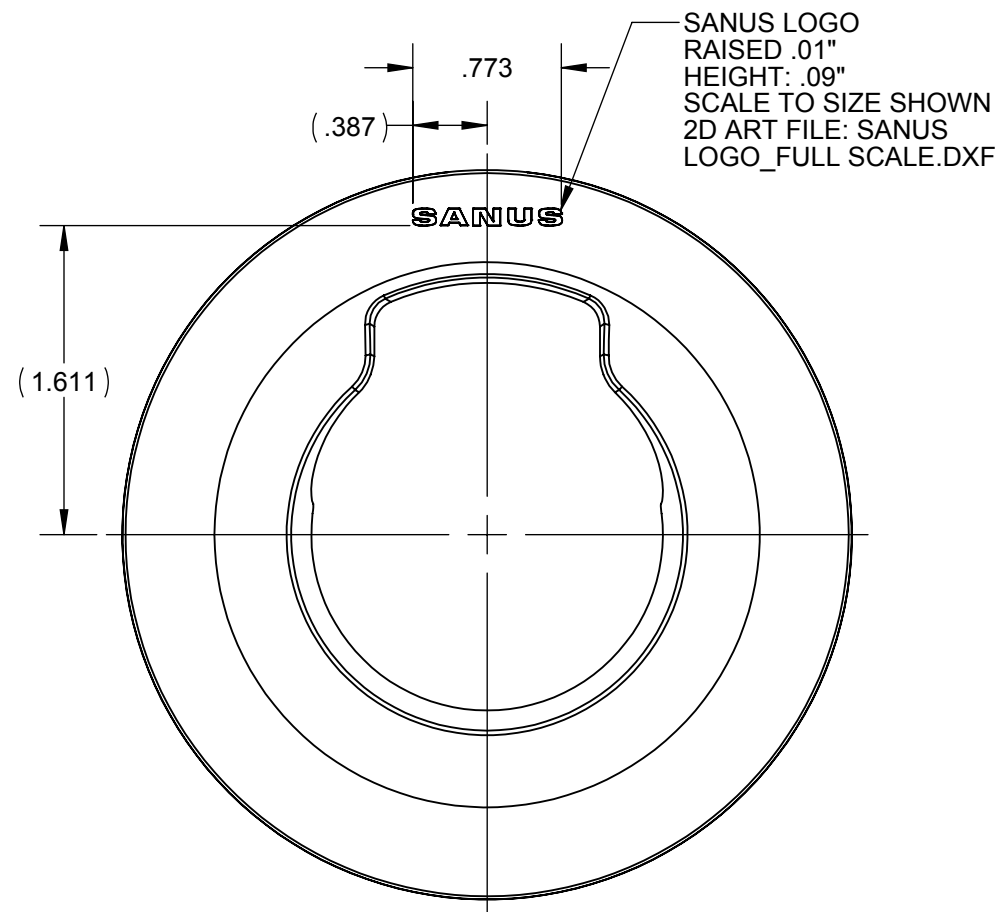
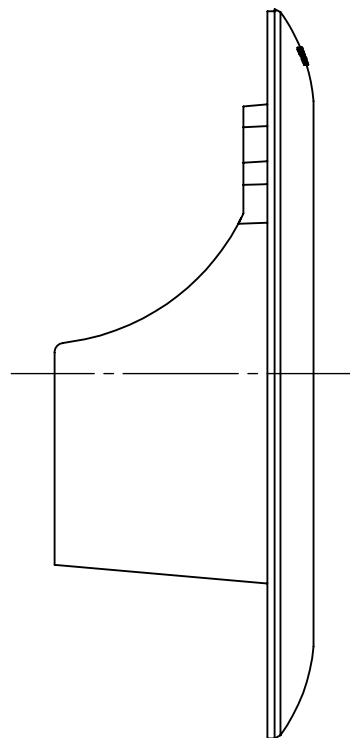
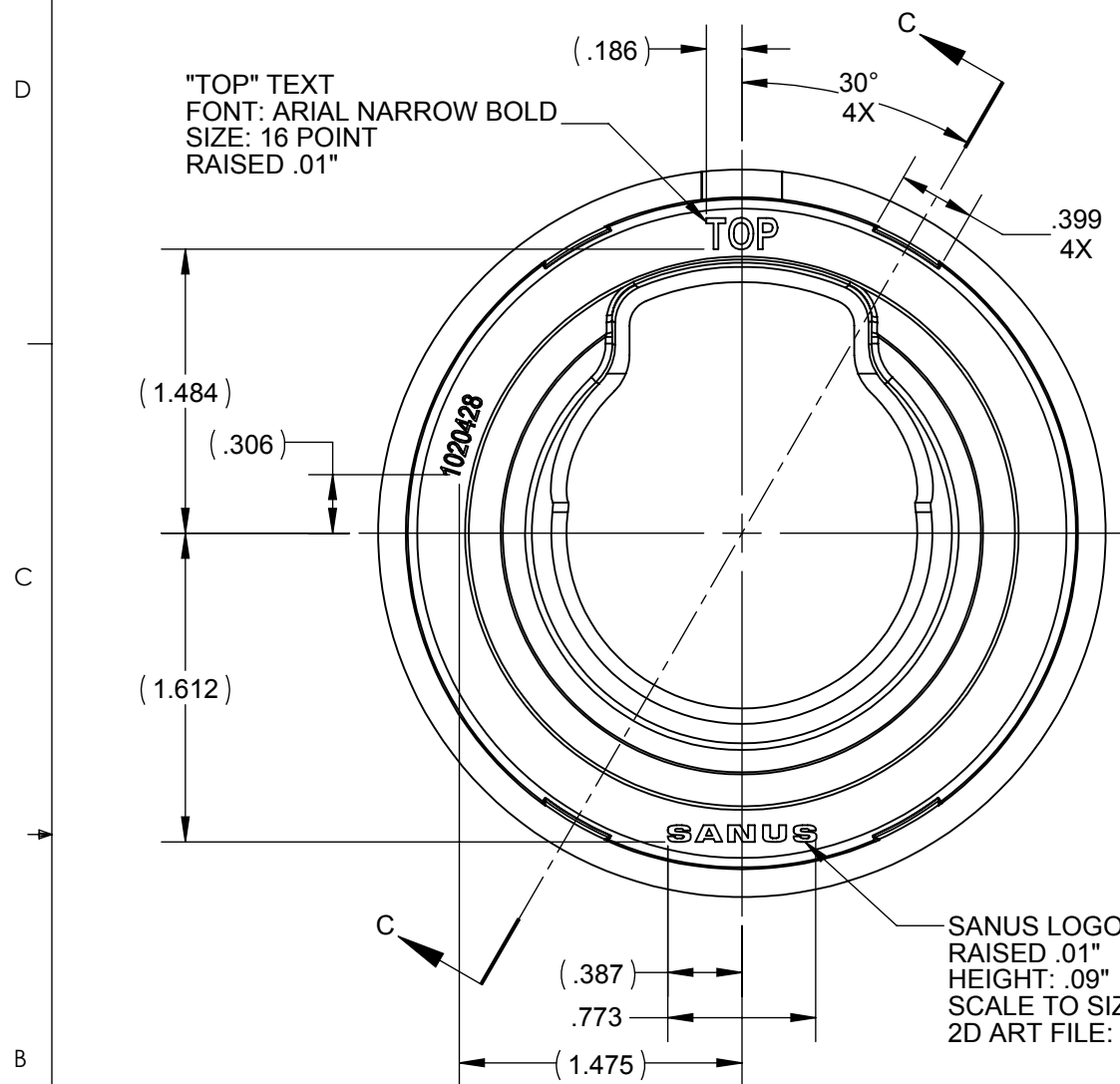
MOLDED PART SPECIFICATION	
DRAFT ANGLE	1° ± 1/2°
MAX RADIUS	.015
MAX GATE VESTIGE	.010
EJECTOR PIN MARKS	FLUSH TO DEPRESSED .010
MAX FLASH	
COSMETIC SURFACE	.006
NON-COSMETIC SURFACE	.01
MOLDED TEXT	
TEXT SIZE	.12
TEXT HEIGHT	RAISED .006 TO .010
CAVITY ID REQUIRED FOR MULTI CAVITY TOOL	
ENVIRONMENTAL MATERIAL REQUIREMENTS	
PRODUCTS, PARTS AND ASSEMBLIES PROVIDED UNDER THIS DRAWING MUST MEET THE REQUIREMENTS DETAILED IN THE LATEST REVISION OF THE LEGRAND NORTH AMERICA CORPORATE ENVIRONMENTAL MATERIAL REQUIREMENTS (EMR) DOCUMENT EMS-009. ANY DEVIATION FROM THE EMR REQUIREMENTS MUST BE APPROVED BY AN AUTHORIZED REPRESENTATIVE OF LEGRAND/WIREMOLD PRODUCT ENGINEERING IN WRITING. THE LATEST EMR DOCUMENT IS AVAILABLE ON REQUEST.	

B	RELEASE FOR PRODUCTION	LY	RRP	4/26/2018
REV.	DESCRIPTION	BY	CHK	DATE

legrand Wiremold MATERIAL: KingFa ABS HF-606 S9W-G0708 PART VOLUME: 1.06 CU.IN. PART WEIGHT: 0.04 LB.	UNLESS OTHERWISE SPECIFIED: DIMENSIONS ARE IN INCHES TOLERANCE: 0 = ±.250 0.0 = ±.100 0.00 = ±.020 0.000 = ±.005 ANGULAR = ±1°	TITLE: FPACM1 TOP TRIM RING FILE NAME: 1020428 DWG. NO.	REV B
	(X.XXX) INSPECTION DIMENSION DO NOT SCALE DRAWING	SCALE: 3:4 SHEET 1 OF 2	1020428

PROPRIETARY DATA NOTICE: THIS DOCUMENT AND ALL INFORMATION THEREON IS PROPRIETARY TO AND THE EXCLUSIVE PROPERTY OF THE WIREMOLD COMPANY AND SHALL NOT BE REPRODUCED, DUPLICATED, OR COPIED IN WHOLE OR PART, DISPOSED OF OR MADE AVAILABLE TO ANY OTHER PERSON, FIRM, OR CORPORATION OR OTHERWISE USED WITHOUT WRITTEN PERMISSION OF THE WIREMOLD COMPANY. THIS DRAWING/PRINT MUST BE RETURNED TO THE WIREMOLD COMPANY UPON COMPLETION OF THE PURPOSE FOR WHICH SUCH PERMISSION MAY HAVE BEEN GRANTED.

PRODUCTION

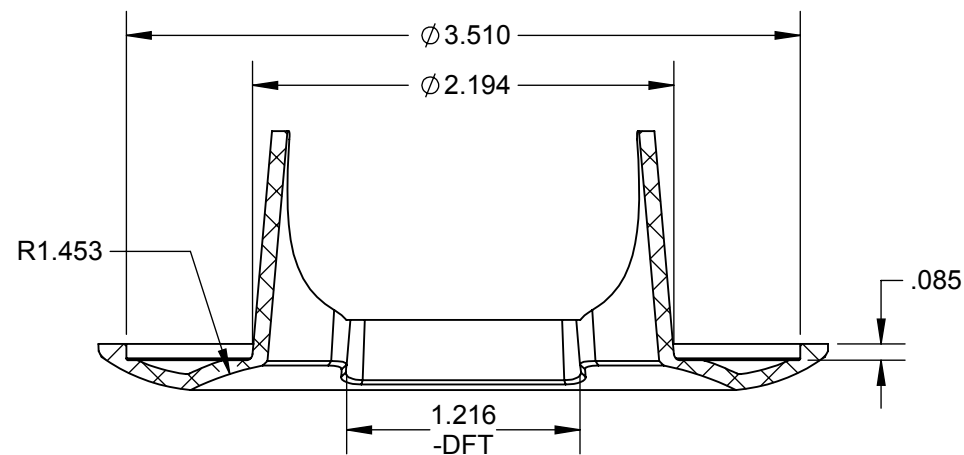


SECTION C-C
SCALE 4 : 1

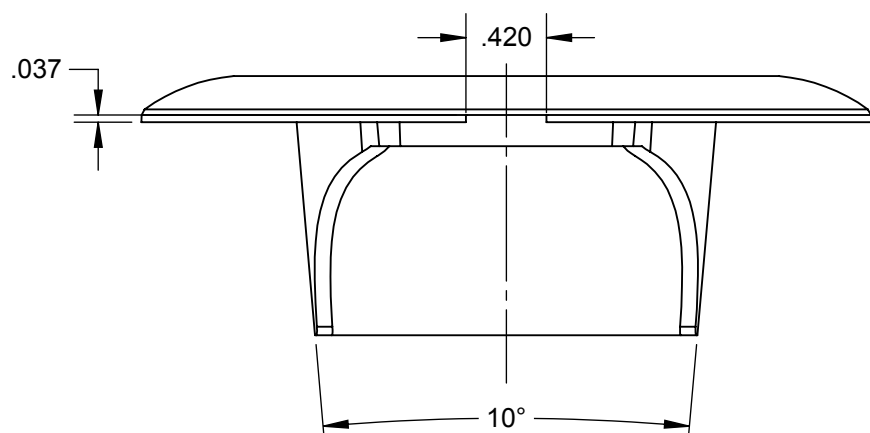
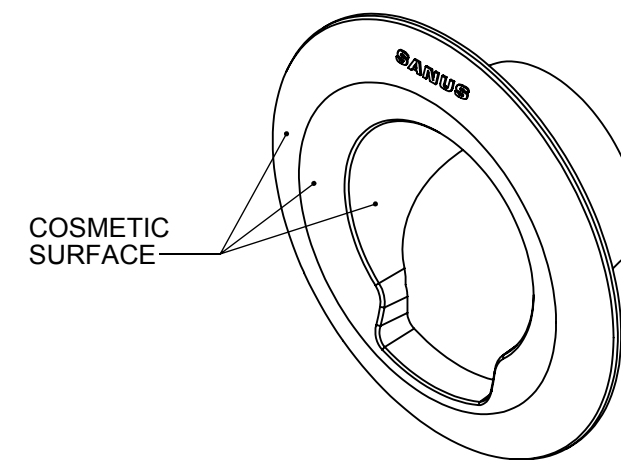
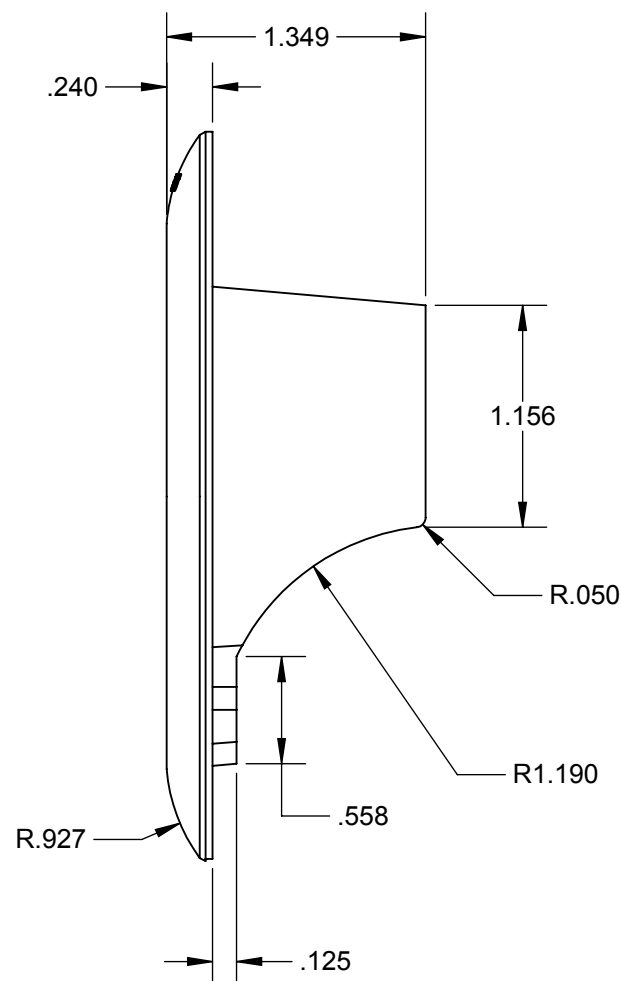
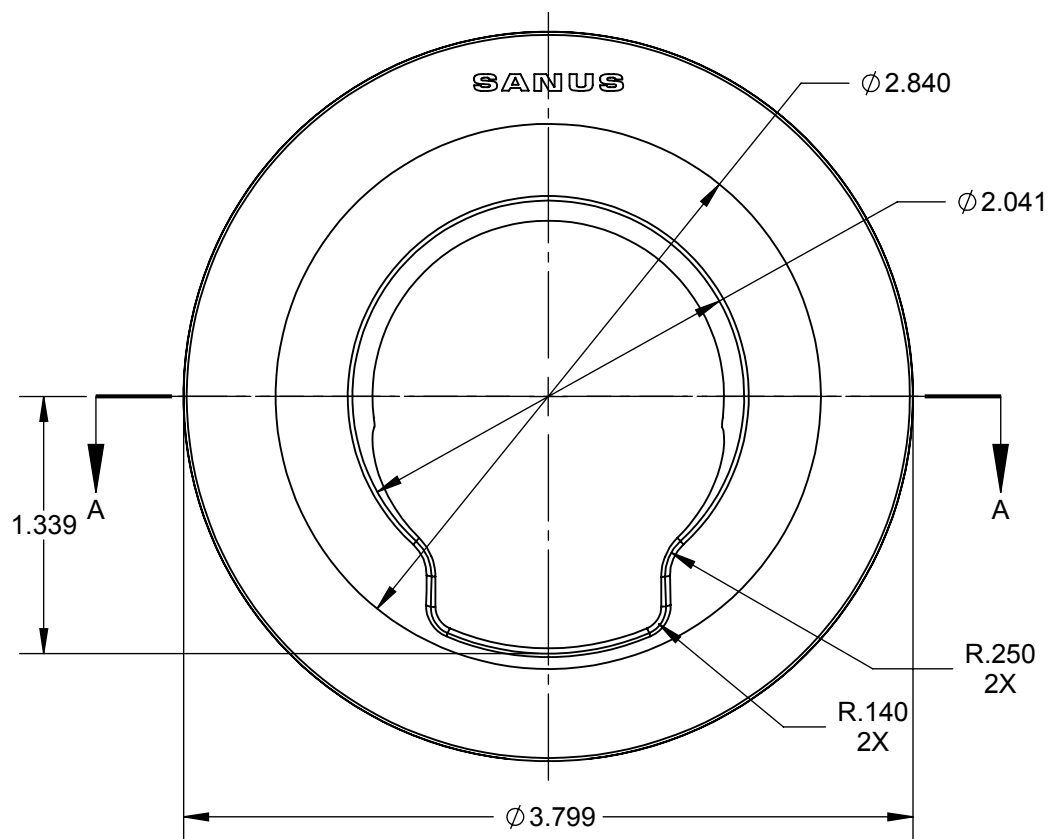
PROPRIETARY DATA NOTICE: THIS DOCUMENT AND ALL INFORMATION THEREON IS PROPRIETARY TO AND THE EXCLUSIVE PROPERTY OF THE WIREMOLD COMPANY AND SHALL NOT BE REPRODUCED, DUPLICATED, OR COPIED IN WHOLE OR PART, DISPOSED OF OR MADE AVAILABLE TO ANY OTHER PERSON, FIRM, OR CORPORATION OR OTHERWISE USED WITHOUT WRITTEN PERMISSION OF THE WIREMOLD COMPANY. THIS DRAWING/PRINT MUST BE RETURNED TO THE WIREMOLD COMPANY UPON COMPLETION OF THE PURPOSE FOR WHICH SUCH PERMISSION MAY HAVE BEEN GRANTED.

	UNLESS OTHERWISE SPECIFIED: DIMENSIONS ARE IN INCHES		TITLE: FPACM1 TOP TRIM RING		
	MATERIAL: KingFa ABS HF-606 S9W-G0708	TOLERANCE: 0 = ±.250 0.0 = ±.100 0.00 = ±.020 0.000 = ±.005 ANGULAR = ±1°	 THIRD ANGLE PROJECTION	FILE NAME: 1020428	REV
PART VOLUME: 1.06 CU.IN.	(X.XXX) INSPECTION DIMENSION		DWG. NO. 1020428		
PART WEIGHT: 0.04 LB.	DO NOT SCALE DRAWING		SCALE: 1:1	SHEET 2 OF 2	B

PRODUCTION



SECTION A-A



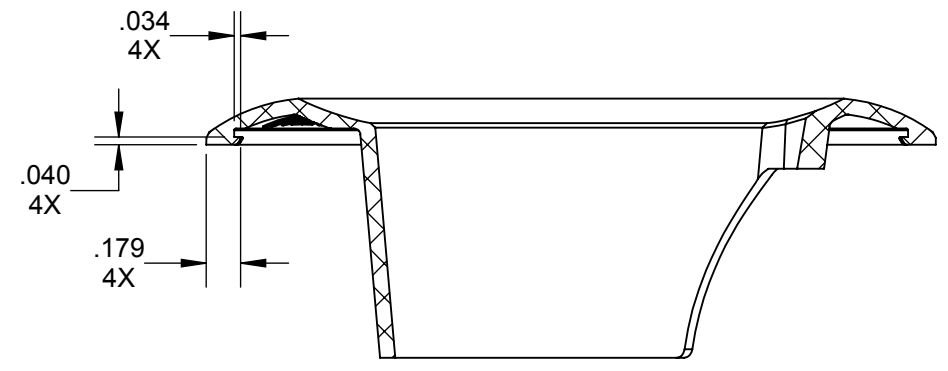
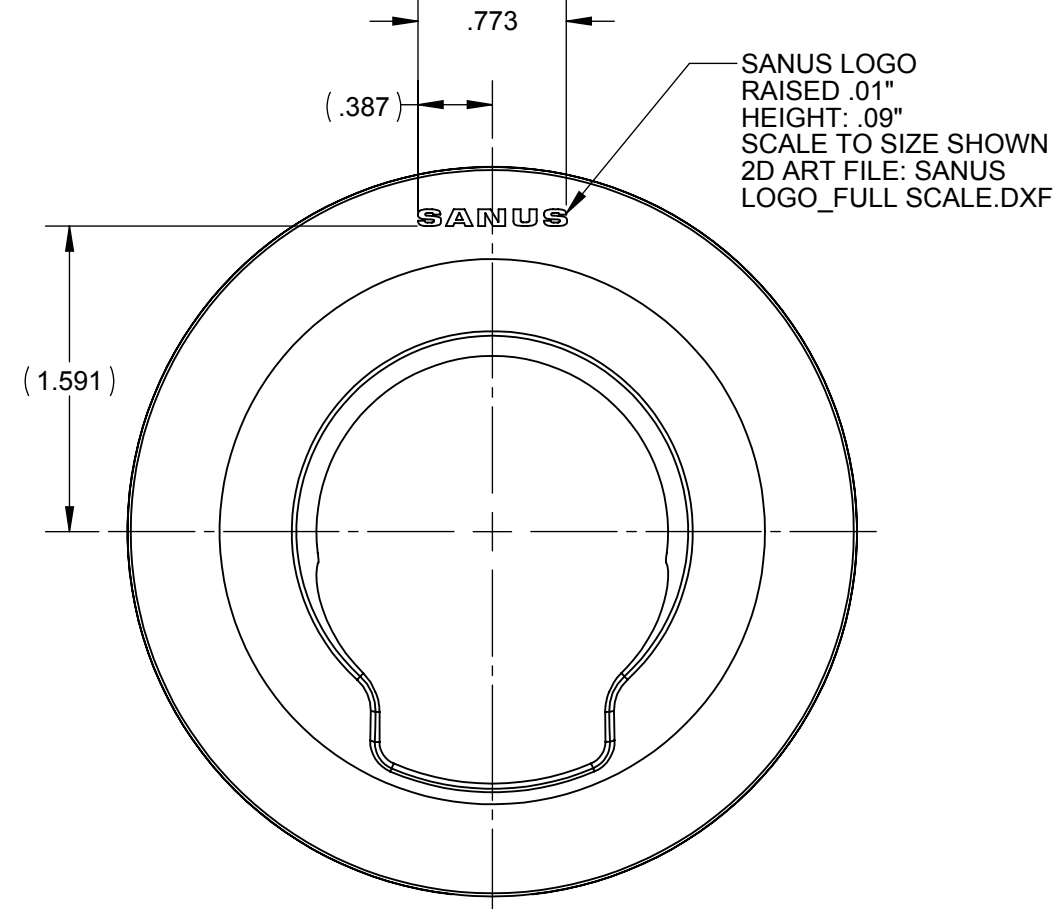
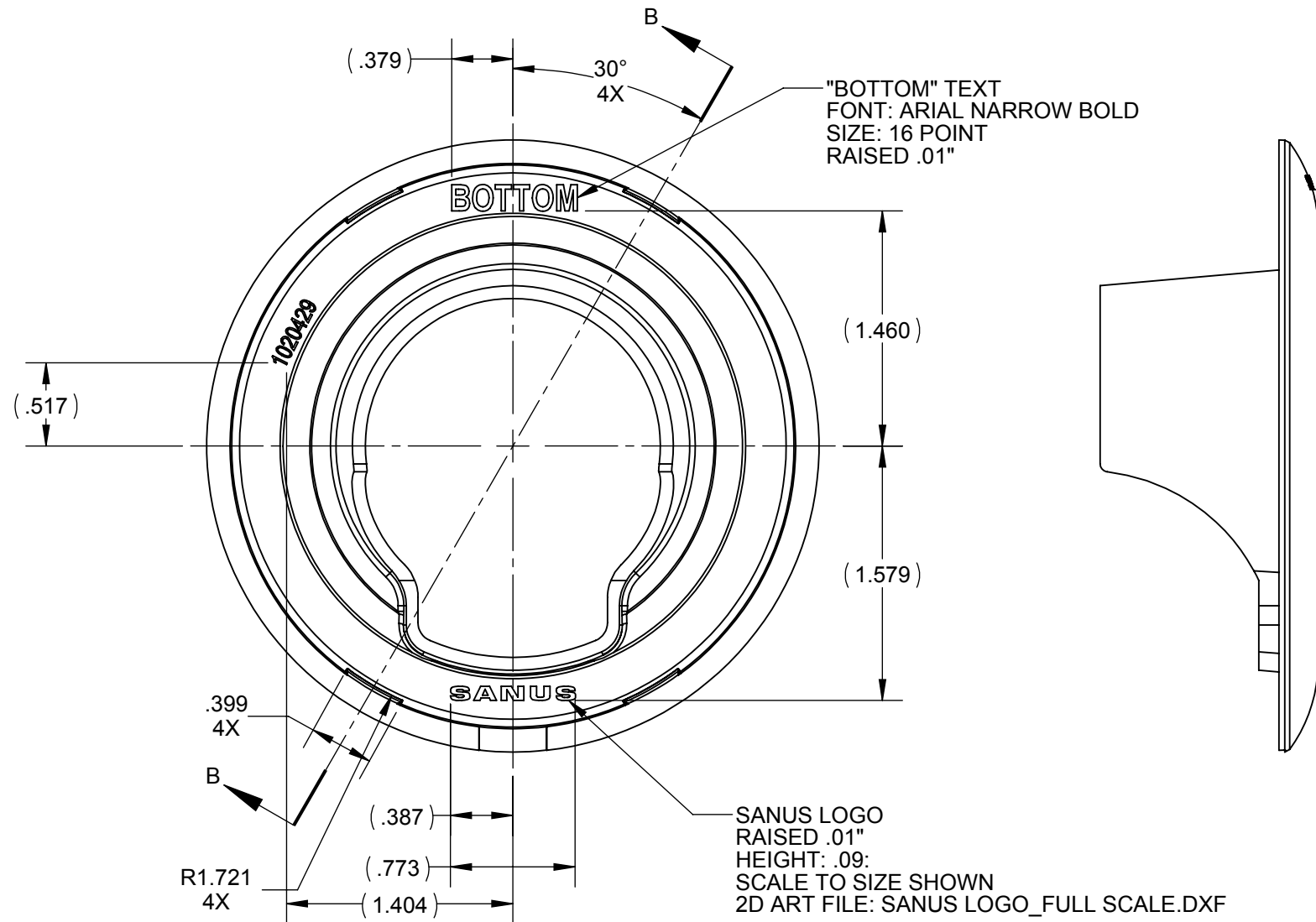
MOLDED PART SPECIFICATION	
DRAFT ANGLE	1° ± 1/2°
MAX RADIUS	.015
MAX GATE VESTIGE	.010
EJECTOR PIN MARKS	FLUSH TO DEPRESSED .010
MAX FLASH	
COSMETIC SURFACE	.006
NON-COSMETIC SURFACE	.01
MOLDED TEXT	
TEXT SIZE	.12
TEXT HEIGHT	RAISED .006 TO .010
CAVITY ID REQUIRED FOR MULTI CAVITY TOOL	
ENVIRONMENTAL MATERIAL REQUIREMENTS	
PRODUCTS, PARTS AND ASSEMBLIES PROVIDED UNDER THIS DRAWING MUST MEET THE REQUIREMENTS DETAILED IN THE LATEST REVISION OF THE LEGRAND NORTH AMERICA CORPORATE ENVIRONMENTAL MATERIAL REQUIREMENTS (EMR) DOCUMENT EMS-009. ANY DEVIATION FROM THE EMR REQUIREMENTS MUST BE APPROVED BY AN AUTHORIZED REPRESENTATIVE OF LEGRAND/WIREMOLD PRODUCT ENGINEERING IN WRITING. THE LATEST EMR DOCUMENT IS AVAILABLE ON REQUEST.	

REV.	DESCRIPTION	BY	CHK	DATE
B	RELEASE FOR PRODUCTION	LY	RRP	4/26/2018

legrand Wiremold MATERIAL: KingFa ABS HF-606 S9W-G0708 PART VOLUME: 1.06 CU.IN. PART WEIGHT: 0.04 LB.	UNLESS OTHERWISE SPECIFIED: DIMENSIONS ARE IN INCHES TOLERANCE: 0 = ±.250 0.0 = ±.100 0.00 = ±.020 0.000 = ±.005 ANGULAR = ±1° THIRD ANGLE PROJECTION	TITLE: FPACM1 BOTTOM TRIM RING FILE NAME: 1020429 DWG. NO. 1020429 REV B	
DO NOT SCALE DRAWING		SCALE: 1:1	SHEET 1 OF 2

PROPRIETARY DATA NOTICE: THIS DOCUMENT AND ALL INFORMATION THEREON IS PROPRIETARY TO AND THE EXCLUSIVE PROPERTY OF THE WIREMOLD COMPANY AND SHALL NOT BE REPRODUCED, DUPLICATED, OR COPIED IN WHOLE OR PART, DISPOSED OF OR MADE AVAILABLE TO ANY OTHER PERSON, FIRM, OR CORPORATION OR OTHERWISE USED WITHOUT WRITTEN PERMISSION OF THE WIREMOLD COMPANY. THIS DRAWING/PRINT MUST BE RETURNED TO THE WIREMOLD COMPANY UPON COMPLETION OF THE PURPOSE FOR WHICH SUCH PERMISSION MAY HAVE BEEN GRANTED.

PRODUCTION

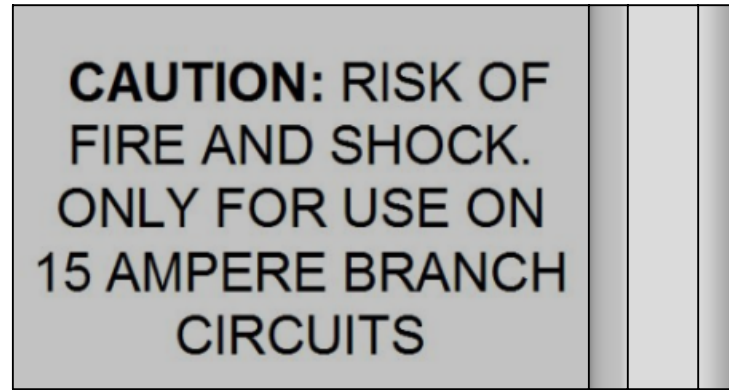
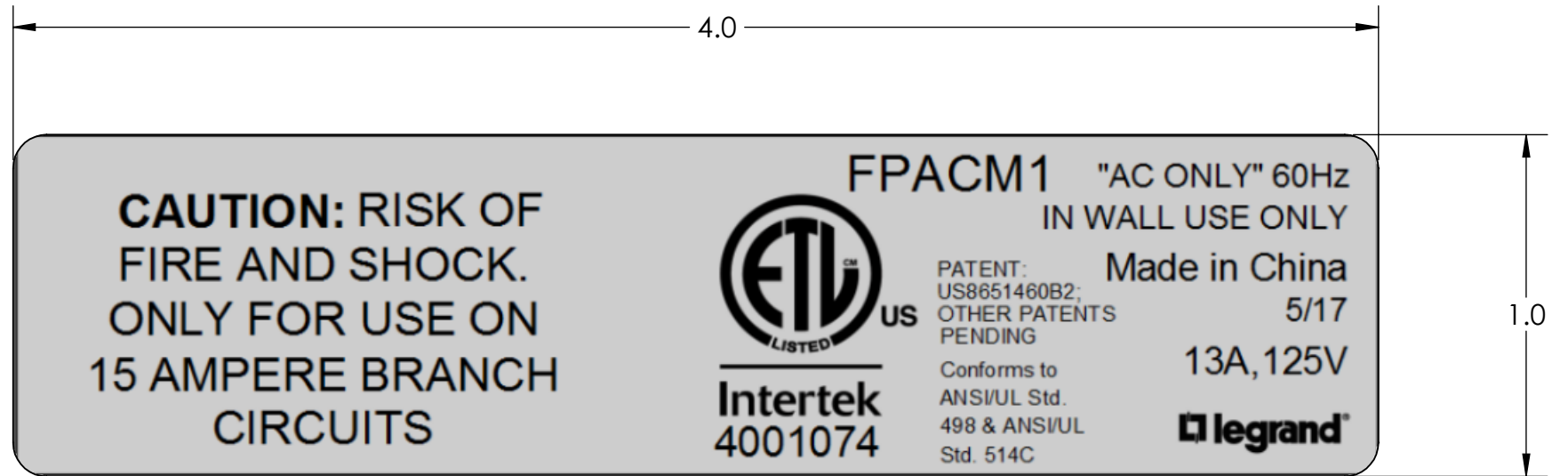
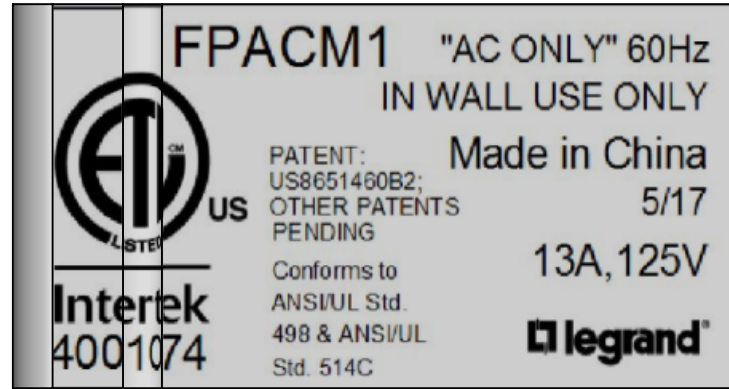


SECTION B-B

	UNLESS OTHERWISE SPECIFIED: DIMENSIONS ARE IN INCHES		TITLE: FPACM1 BOTTOM TRIM RING	
	MATERIAL: KingFa ABS HF-606 S9W-G0708		TOLERANCE: 0 = ±.250 0.0 = ±.100 0.00 = ±.020 0.000 = ±.005 ANGULAR = ±1°	
PART VOLUME: 1.06 CU.IN.		 THIRD ANGLE PROJECTION		FILE NAME: 1020429 DWG. NO.
PART WEIGHT: 0.04 LB.		(X.XXX) INSPECTION DIMENSION		REV B
DO NOT SCALE DRAWING		SCALE: 1:1		SHEET 2 OF 2

PROPRIETARY DATA NOTICE: THIS DOCUMENT AND ALL INFORMATION THEREON IS PROPRIETARY TO AND THE EXCLUSIVE PROPERTY OF THE WIREMOLD COMPANY AND SHALL NOT BE REPRODUCED, DUPLICATED, OR COPIED IN WHOLE OR PART, DISPOSED OF OR MADE AVAILABLE TO ANY OTHER PERSON, FIRM, OR CORPORATION OR OTHERWISE USED WITHOUT WRITTEN PERMISSION OF THE WIREMOLD COMPANY. THIS DRAWING/PRINT MUST BE RETURNED TO THE WIREMOLD COMPANY UPON COMPLETION OF THE PURPOSE FOR WHICH SUCH PERMISSION MAY HAVE BEEN GRANTED.

PRODUCTION



INSTALLED VIEW

ENVIRONMENTAL MATERIAL REQUIREMENTS
 PRODUCTS, PARTS AND ASSEMBLIES PROVIDED UNDER THIS DRAWING MUST MEET THE REQUIREMENTS DETAILED IN THE LATEST REVISION OF THE LEGRAND NORTH AMERICA CORPORATE ENVIRONMENTAL MATERIAL REQUIREMENTS (EMR) DOCUMENT EMS-009. ANY DEVIATION FROM THE EMR REQUIREMENTS MUST BE APPROVED BY AN AUTHORIZED REPRESENTATIVE OF LEGRAND/WIREMOLD PRODUCT ENGINEERING IN WRITING. THE LATEST EMR DOCUMENT IS AVAILABLE ON REQUEST.

NOTES:

1. LABEL STOCK AND RIBBON COMBINATION MUST BE A UL RECOGNIZED COMPONENT MARKING & LABEL SYSTEM PER (PGDQ2 AND PGDQ8).
2. LABEL STOCK MUST BE SUITABLE FOR USE ON PVC AND NYLON.
3. LABEL STOCK MATERIAL TO BE WHITE WITH BLACK TEXT

	Label Information Entry	Font & Font Size
Part Number	FPACM1	Arial, Regular, 11 point
Warning	"AC ONLY" 60Hz IN WALL USE ONLY	Arial, Regular, 7 point
Made In Location	CHINA	Arial, Regular, 8 point
Electrical Rating	13A, 125V	Arial, Regular, 8 point
Primary Listing	ETLus Listed	
ETL Factory ID	4001074	Arial, Regular, 6 point
ETL Text	Conforms to ANSI/UL Std. 498 & ANSI/UL Std. 514C	Arial Narrow, Regular, 5 point
Patent Number(s)	US8651460B2; OTHER PATENTS PENDING	Arial, Regular, 5 point
Date	TO BE THE MONTH/YEAR THE LABEL IS PRINTED	Arial, Regular, 7 point
Special Text	CAUTION: RISK OF FIRE AND SHOCK. ONLY FOR USE ON 15 AMPERE BRANCH CIRCUITS	Caution: Arial, Bold, 10 point Text: Arial, Regular, 10 point

B	RELEASE FOR PRODUCTION	LY	RRP	4/27/2018
REV	DESCRIPTION	BY	CHK	DATE
UNLESS OTHERWISE SPECIFIED: DIMENSIONS ARE IN INCHES		TITLE: PLABEL FPACM1 PRODUCT LABEL		
ASSEMBLY WEIGHT:	TOLERANCE: 0 = ±.250 0.0 = ±.100 0.00 = ±.030 0.000 = ±.010 ANGULAR = ±1°	THIRD ANGLE PROJECTION		
(X.XXX) INSPECTION DIMENSION		FILE NAME: 1020436 DWG. NO.	1020436	REV B
DO NOT SCALE DRAWING		SCALE: 2:1	SHEET 1 OF 1	